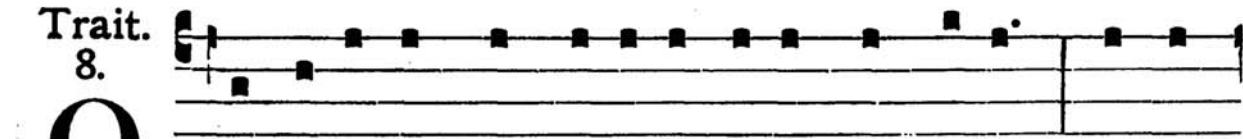
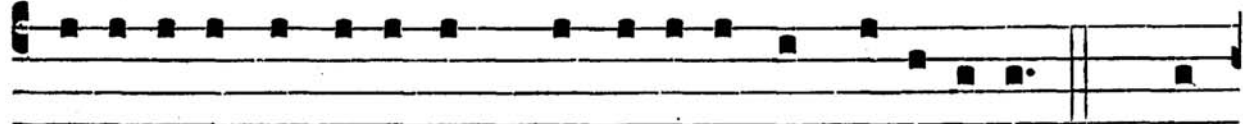


Trait.
8.

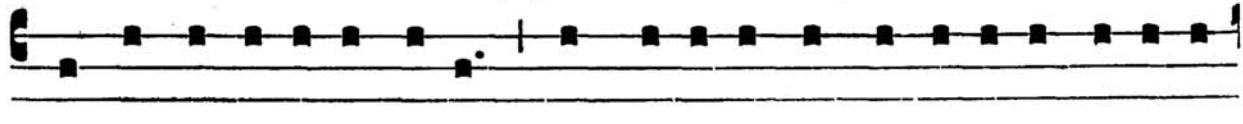


Q

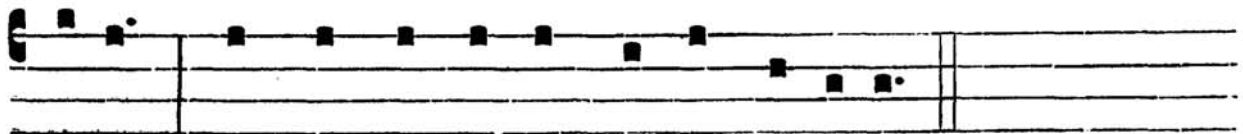
UI confí-dunt * in Dómino, sic-ut mons Sí-on : non com-



mové-bi-tur in aetérnum, qui há-bi-tat in Je-rú-sa-lem. V. Món-



tes in circú- i-tu é-jus : et Dóminus in circú- i-tu pópu-li



sú- i, ex hoc nunc et usque in saécu-lum.